

YEAR 2013

COVERAGE (B) STATION 2206

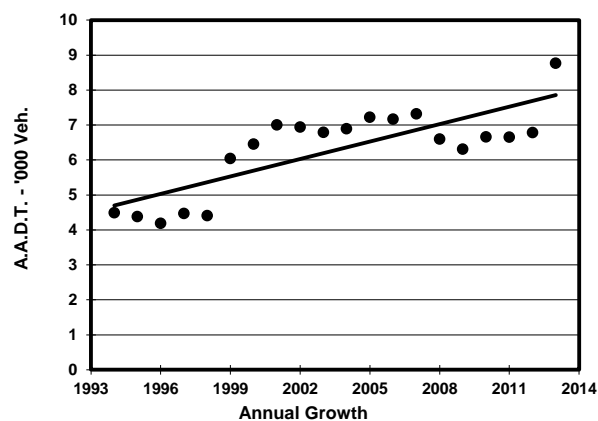
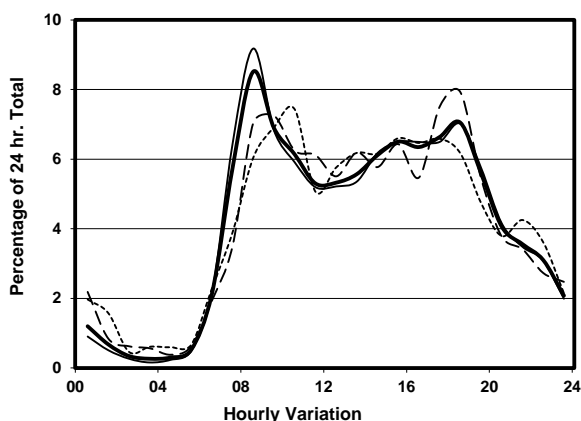
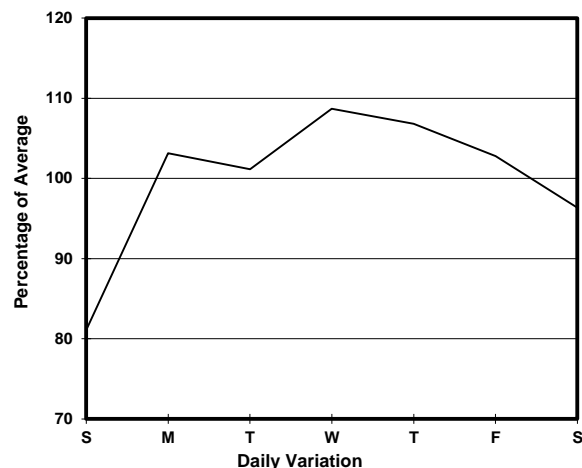
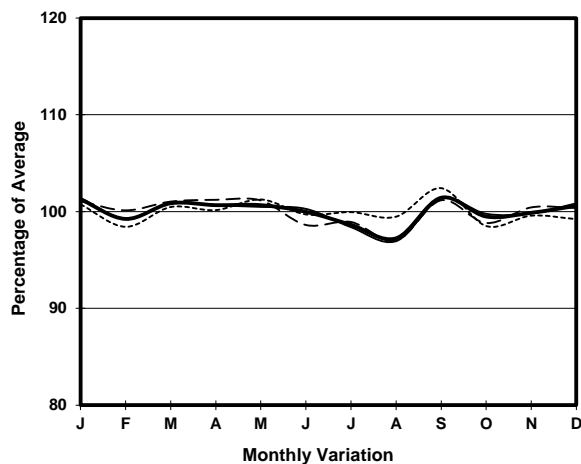
ROAD NETWORK MAJOR

ROAD TYPE DISTRICT DISTRIBUTOR

LINK BELCHER'S ST & VICTORIA RD (from SMITHFIELD RD to MOUNT DAVIS RD)



1. TRAFFIC FLOW VARIATION AND GROWTH



2. TRAFFIC CHARACTERISTICS (BY DIRECTION)

Parameter	All - Day	Mon. - Fri.	Sat.	Sun.
EAST BOUND				
A.A.D.T.	4220	4520	4080	3150
R 12 / 24 - %	76.8	77.9	75.1	71.7
R 16 / 24 - %	92.6	93.5	90.3	89.5
AM Peak Hour	0800-0900	0800-0900	0900-1000	0900-1000
One-way flow at AM peak hour	430	540	250	170
T - % (AM)	-	7.6	-	-
PM Peak Hour	1800-1900	1800-1900	1800-1900	1700-1800
One-way flow at PM peak hour	320	330	350	240
T - % (PM)	-	20	-	-
Prop.of commercial vehicles - 16 hr.	-	11	-	-
WEST BOUND				
A.A.D.T.	4550	4740	4460	4040
R 12 / 24 - %	75.5	75.8	74.9	74.5
R 16 / 24 - %	92.3	93	90.4	89.9
AM Peak Hour	0900-1000	0800-0900	0800-0900	0900-1000
One-way flow at AM peak hour	320	310	380	330
T - % (AM)	-	8.2	-	-
PM Peak Hour	1800-1900	1800-1900	1800-1900	1600-1700
One-way flow at PM peak hour	300	320	330	270
T - % (PM)	-	15	-	-
Prop.of commercial vehicles - 16 hr.	-	14.2	-	-

3. OTHER INFORMATION AND COMMENT

4. Vehicle classification and occupancy - Monday to Friday

Time		Class of vehicle									
		Motor Cycle	Private Car	Taxi	Private LB	PLB	Goods veh.		Non Fr. Bus	Fr. Bus	
							Light	M & H		SD	DD
0700-0800	Pro	2.7	27.9	26.1	2.7	15.3	8.1	5.4	6.3	2.2	3.4
	Ocp	1.3	1.3	2.7	8.3	13.6	1.3	1.2	14.7	28.1	23.5
0800-0900 Peak hour	Pro	3.0	55.0	14.8	3.8	6.8	8.9	1.3	3.8	1.1	1.7
	Ocp	1.0	1.5	2.1	6.0	14.6	1.5	1.0	8.8	26.1	17.1
0900-1000	Pro	3.1	50.7	8.8	3.1	6.2	16.6	4.7	3.6	1.0	2.2
	Ocp	1.0	1.4	2.0	4.0	11.0	2.0	1.8	7.0	23.5	11.1
1000-1100	Pro	1.4	43.2	19.9	0.7	8.2	16.4	4.8	1.4	1.5	2.6
	Ocp	1.5	1.3	1.9	4.0	10.0	1.7	1.7	1.0	20.3	9.0
1100-1200	Pro	3.3	40.5	9.1	5.0	9.1	18.2	8.3	1.7	2.1	2.9
	Ocp	1.0	1.7	2.3	2.2	10.8	1.7	1.9	1.0	18.2	4.9
1200-1300	Pro	2.5	31.6	15.8	2.5	6.7	16.6	15.8	5.0	1.9	1.7
	Ocp	1.0	1.4	2.2	2.3	14.5	1.5	1.3	6.5	19.0	12.4
1300-1400	Pro	7.1	33.8	14.1	0.8	9.4	18.1	8.6	3.9	2.2	2.0
	Ocp	1.0	1.6	1.9	3.0	11.8	1.8	1.7	6.0	15.0	7.1
1400-1500	Pro	1.8	40.2	17.7	6.7	11.0	13.4	4.9	1.2	1.2	1.8
	Ocp	1.3	1.5	2.0	4.1	6.3	1.7	1.9	6.5	18.6	7.8
1500-1600	Pro	1.5	45.1	13.0	1.5	8.4	17.6	6.9	1.5	1.9	2.5
	Ocp	1.0	1.7	2.7	5.5	12.4	1.7	1.7	29.5	21.6	8.6
1600-1700	Pro	6.0	28.5	17.2	5.2	6.7	19.5	5.2	7.5	1.7	2.4
	Ocp	1.1	1.8	2.3	6.4	13.0	1.6	1.4	7.9	19.1	14.1
1700-1800	Pro	3.2	43.5	12.9	1.6	11.3	14.5	3.2	4.8	2.2	2.6
	Ocp	1.0	1.4	1.9	1.5	14.4	1.6	1.0	13.3	25.6	14.8
1800-1900	Pro	1.5	43.8	16.1	2.2	10.2	8.8	3.7	9.5	1.8	2.6
	Ocp	1.5	1.5	2.2	1.3	13.4	1.6	1.6	36.8	27.2	20.1
1900-2000	Pro	6.0	53.2	21.1	0.6	7.3	2.4	1.8	3.6	1.8	2.1
	Ocp	1.1	1.4	2.2	1.0	12.5	1.8	1.0	15.3	22.8	10.1
2000-2100	Pro	4.4	36.6	32.2	0.0	10.5	8.7	1.7	0.0	2.2	3.7
	Ocp	1.0	1.6	1.7	0.0	12.3	1.9	1.0	0.0	16.9	5.7
2100-2200	Pro	7.4	44.4	28.4	0.0	7.4	1.2	4.9	0.0	3.7	2.5
	Ocp	1.2	1.6	2.1	0.0	14.2	2.0	1.8	0.0	15.4	4.8
2200-2300	Pro	1.2	38.5	34.8	0.0	13.7	3.7	1.2	0.0	2.2	4.7
	Ocp	1.0	1.8	1.9	0.0	7.5	1.0	1.0	0.0	10.0	6.2
16 hours	Pro	3.4	42.4	17.7	2.5	8.9	12.3	4.9	3.5	1.8	2.4
	Ocp	1.1	1.5	2.1	4.3	11.9	1.7	1.5	14.4	20.6	11.3

Legend

- Pro.** Proportion of vehicles in % (Sum may not add up to 100% due to figure rounding)
- Ocp.** Average occupancy of vehicles
- M&H** Medium and Heavy